

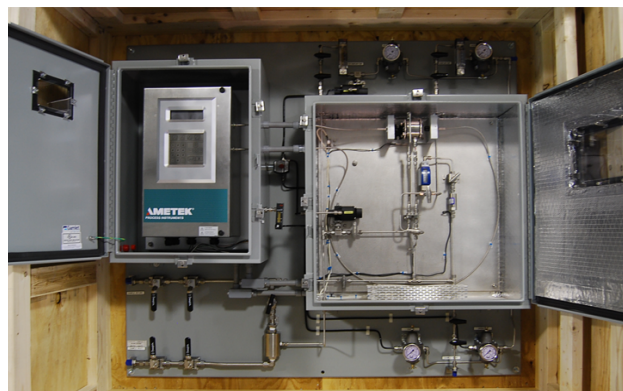
PRODUCT DATA SHEET

IPS-4 Fiber Optic Coupled Analyzer

Ultraviolet (UV) spectrophotometer integrated with fiber-coupled sample cells

Today's chemical producers are under tremendous pressure to reduce plant risks, cut costs, lower maintenance expenses, and improve product quality. Unfortunately, new chemical processes are often quite complex and safely obtaining representative samples to analyze can be a challenge. In particular cases, it may be advantageous to keep the sampling points as close as possible to the process stream, or even build the sampling points into the process streams to avoid difficulties that may get involved in sample transportations and sample injections.

In order to meet these demanding objectives, AMETEK has designed an IPS-4 UV analyzer that uses fiber optic connections between separated electronic and sample analysis sections. The IPS-4 with optical fiber-coupled sampling cells is engineered to perform a wide variety of liquid and gas analyses.



KEY BENEFITS

- High temperature and pressure tolerance
 - Up to 300°C (572°F) and 200 barg (3000 psig)
- Versatile mounting options
 - Electronics and sample sections are separated
 - Electronics can be kept out of a highly corrosive environment
- Easier maintenance
 - Sample cells can be mounted on panels or in larger enclosures than a standard IPS-4, allowing for easier access during maintenance

APPLICATIONS

- Chlorine (Cl₂) in hydrocarbons
- Impurities in Cl₂ or fluorine
- Impurities in titanium tetrachloride

KEY MARKETS

- Chemical
- Petrochemical

PERFORMANCE SPECIFICATIONS

Analyzer Range	Parts per million (ppm) to 100% depending upon specific application
Linearity (independent)	<1% full-scale range
Measurement accuracy	<1% full-scale range (application-specific)
Repeatability	<1% full-scale range (application-specific)
Stability	0.5% of full-scale range
Zero drift	<1.0% of full-scale range over 24 hours
Response time	<2 seconds photometric response, <30 seconds to T90
Components	Up to eight components can be measured
Inputs	Two non-isolated analog inputs (0-5V, 0/4-20mA) Two optically isolated discrete DC inputs 22-key piezoelectric keypads
Outputs	Display with multi-lingual capability (language options include English, Spanish, French, German, Russian. This is a partial listing. Contact AMETEK for more information) Two isolated analog outputs (0/4-20 mA) (four additional analog outputs optional) Eight dry relay contacts (NO, 100VA, 240 V) RS485 isolated (supports Modbus RTU) RS232 non-isolated Fast Ethernet (IEEE802.3)
Sample system limits	Sample pressure: Up to 200 barg (3000 psig) for some configurations Oven temperature: Oven heater capable of maintaining 300°C (572°F)
Utility requirements	Electrical: 120 VAC (105 to 132 VAC), 47 to 63 Hz 240 VAC (209 to 264 VAC), 47 to 63 Hz Power consumption: <700 W with sample system heater <300 W without sample system heater
Instrument air	4.8-6.9 barg (70-100 psig)
Environmental requirements	Ambient temperature: -20 to 50°C (-4° to 122°F) Ingress protection: IP65 and NEMA 4X Enclosure Enclosure material: 316SS, typically mounted in a fiberglass cabinet and mounted on a 316SS back panel.
Physical dimensions (W x H x D)	Electronics enclosure: 300 x 530 x 260 mm (11.7 x 20.9 x 10.2 in.) Weight: 66 kg (145 lb.) for base system
Approvals and certifications	Meets various ATEX, CEC, IECEx & NEC hazardous area requirements. Consult AMETEK for specific details

SALES, SERVICE & MANUFACTURING

USA - Pennsylvania

150 Freeport Road
Pittsburgh PA 15238
Tel: +1 412 828 9040
Fax: +1 412 826 0399

USA - Delaware

455 Corporate Blvd.
Newark DE 19702
Tel: +1 302 456 4400
Fax: +1 302 456 4444

Canada - Alberta

2876 Sunridge Way NE
Calgary AB T1Y 7H9
Tel: +1 403 235 8400
Fax: +1 403 248 3550

WORLDWIDE SALES AND SERVICE LOCATIONS

USA

Tel: +1 713 466 4900
Fax: +1 713 849 1924

Brazil

Tel: +55 19 2107 4100

Germany

Tel: +49 2159 9136 0
Fax: +49 2159 9136 39

India

Tel: +91 80 6782 3200
Fax: +91 80 6780 3232

Singapore

Tel: +65 6484 2388
Fax: +65 6481 6588

China

Beijing
Tel: +86 10 8526 2111
Fax: +86 10 8526 2141
Chengdu
Tel: +86 28 8675 8111
Fax: +86 28 8675 8141
Shanghai
Tel: +86 21 5868 5111
Fax: +86 21 5866 0969



© 2024, by AMETEK, Inc. All rights reserved. Printed in the U.S.A. F-0430 Rev 7 (0624)

One of a family of innovative process analyzer solutions from AMETEK Process Instruments.
Specifications subject to change without notice.

