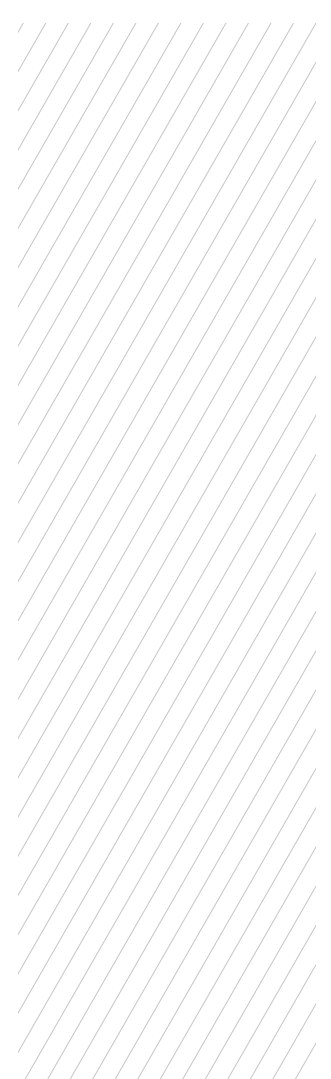




RX20

DIAPHRAGM VALVE

- 100% Helium Leak Test performed
- Available in sizes 3/4" to 1" to support a wide range of connections
- Assembling, testing & Packaging in cleanroom: Class ISO 4
- Individual serial number for full traceability
- Electropolished surface roughness per SEMI F19 UHP Grade
- 316L VAR® stainless steel double melt per SEMI F20 option available
- Excellent purgeability due to optional purge ports
- Fluid specific seat material as standard options
- Replaceable seat



RX20 | HIGH PERFORMANCE UHP LINE VALVES

SPECIFICATIONS

Max. inlet pressure See table next page	Pneumatic actuator opening pressure 5 to 7 bar (73 to 102 psig)	Certified max. Helium outboard leak rate $\leq 1 \times 10^{-9}$ mbar.l/s
Temperature range See table next page	Nominal seat diameter 20 mm (0.79")	Certified max. Helium across the seat leak rate (at max. pressure) $\leq 1 \times 10^{-9}$ mbar.l/s
Flow capacity (Cv) 3.5	Burst pressure > 700 bar (10152 psig)	Certified max. Helium inboard leak rate (at max. pressure) $\leq 1 \times 10^{-9}$ mbar.l/s

CONSTRUCTION MATERIAL

	Parts	Material
Wetted parts	Body	SS 316L, VAR
	Seat	PCTFE, PVDF, VESPEL®
	Diaphragm	Phynox®
	Backup diaphragm	Phynox®
Non-wetted parts	Handwheel	Aluminium
	Actuator Body	Aluminium, Stainless Steel
	Others	Stainless Steel, Alloys, Brass

SURFACE FINISH

S	Ra 0.4 μm (15 μin)
V	Ra 0.25 μm EP (10 μin)
U	Ra 0.13 μm EP (5 μin)

VALVE VERSION / MAX. WORKING PRESSURE

Valve	Max. working pressure
RX20 (MT) Multiturn handwheel	15 bar
RX20 (PP2) Pneumatically actuated	15 bar

TEMPERATURE RANGE

Seat (Actuation type)	Temperature Range
PCTFE / PVDF (manual & pneumatic)	-20°C to +65°C (-40°F to +149°F)
VespeL® (manual & pneumatic)	-20°C to +150°C (-40°F to +302°F)

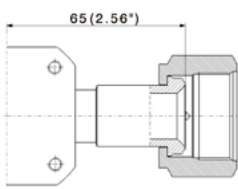
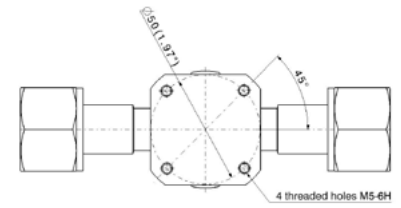
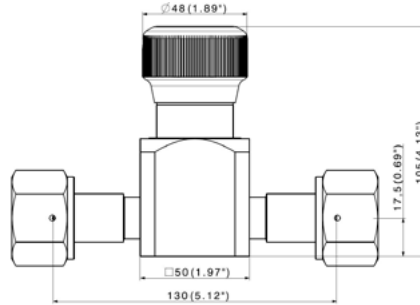
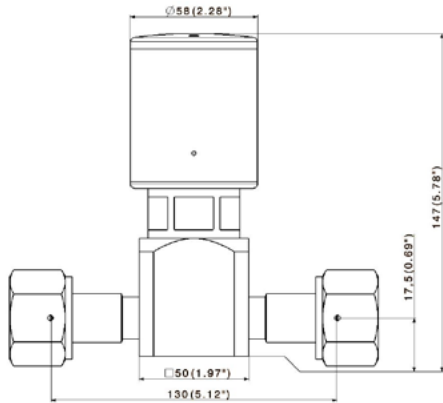
SCAN ME FOR FLOW CURVES & PRODUCT CONFIGURATOR



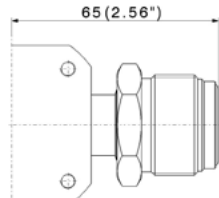
RX20 - PNEUMATIC VALVE (PP2NC, PP2NO)

RX20 - MULTI-TURN VALVE (MT)

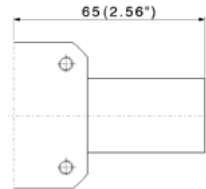
RX20-BOTTOM VIEW



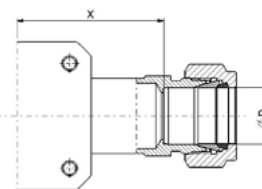
Female (face seal)
Swivel



Male (face seal)
Swivel



BWO for micro-welding
head



Compression tube fittings

ØD	X
3/4"	49,3
1"	46

PRODUCT CONFIGURATOR

	Surface Finish	Actuation	Porting Configuration	Body Material	Seat Material	End Connection	Options							
RX20	S	MT	2W1	I	K	a/b: B¾	-							
	Ra 0.4 µm (15 µin)	S	Multi-Turn Handwheel (15 bar)	MT	2 ports in line	2W1	SS 316L	I	PCTFE (Kel-F®)	K	Metal face seal ¾" - Female	V ¾ F	Electric limit switch***	Cl
	Ra 0.25 µm EP (10 µin)	V	Pneumatically actuated (15 bar)	PP2*	2 Ports in line, upstream purge port - left side	2 WPEG	Hastelloy®**	H	PI (Vespel®)	V	Metal face seal ¾" - Male	V ¾ M		
	Ra 0.13 µm EP (5 µin)*	U			2 Ports in line, downstream purge port - left side	2 WPSG	VAR	A	PVDF	P	BWO ¾" (Butt Orbital Weld)	B¾		
					2 Ports in line, 2 purge ports up-/downstream-left side	2 W1p2					BWO 1" (Butt Orbital Weld)	B 1		
											Metal face seal 1" - Male	V1M		
											Metal face seal 1" - Female	V1F		
											Compression tube fittings	RDB ¾		
											Compression tube fittings	RDB1"		

* Add NO for normally open or NC for normally closed

** On demand

*** For pneumatic actuators only

All specifications and dimensions are subject to change without notice



WE'RE WORLDWIDE

Brasil * China * France * Germany * India * Indonesia
Italy * Japan * Luxembourg * Malaysia * Middle East * Mexico
Philippines * Poland * Singapore * South Korea * Spain
Thailand * Taiwan * United Kingdom * Usa * Vietnam

Find out our locations here
<https://rotarex.com/locations>

