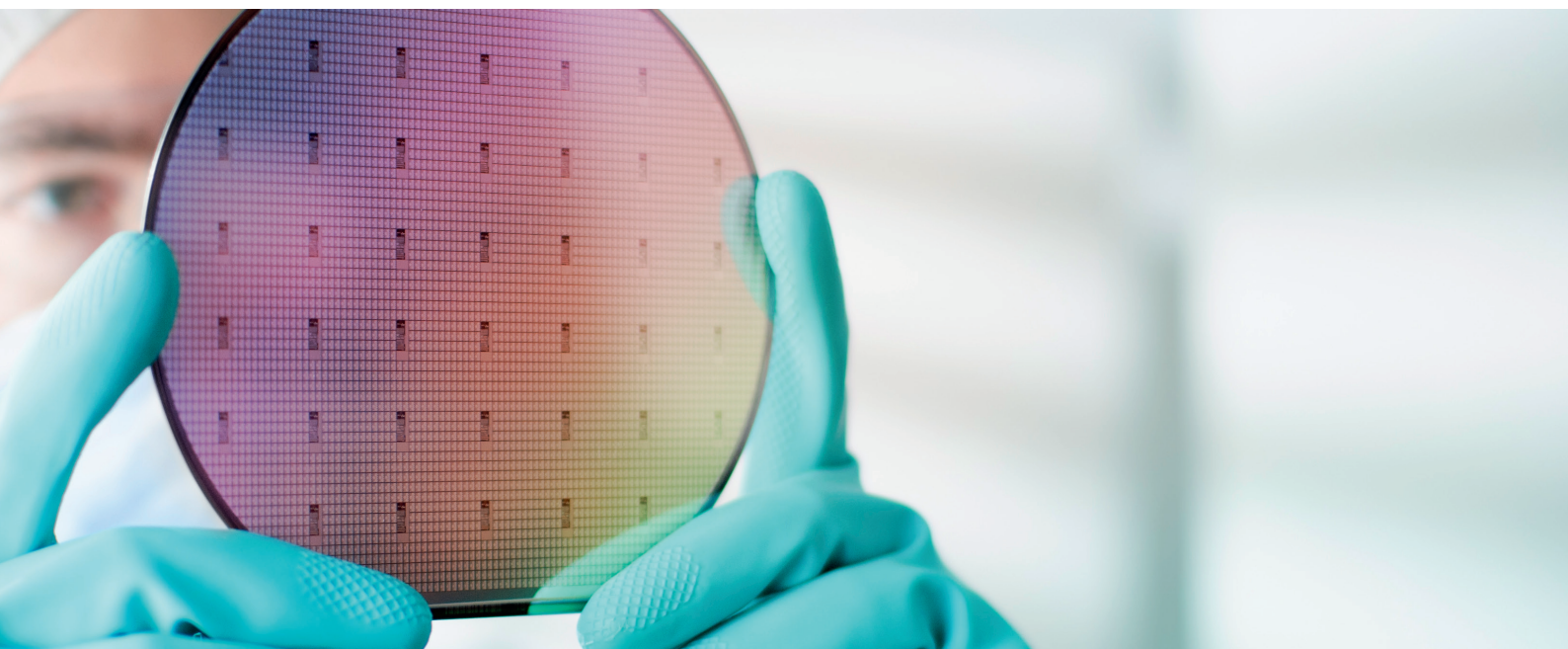




ROTAREX
VALVES - REGULATORS - SYSTEMS



**CGA/DISS SERIES
CYLINDER CONNECTIONS**



CGA/DISS | 40 SERIES STANDARD CONNECTORS (Nipple, Nut and Gasket)

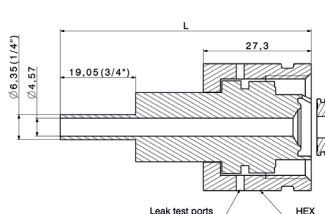
	CGA/DISS number	End Connection	Overall Length (L)	Internal Surface Finish μm (μinch)	Nipple Material		HEX	Gasket Material								
					SS 316 L	VAR		Nickel	PCTFE							
40	632, 634, 636, 638, 640, 642	6**	1/4" Tube Weld*	4BW	2 - 1/2"	Ra 0.2 (8 Ra) EP	•	★	•	V	1 - 1/4"	★	•	PC		
			1/4" Face Seal Male	4FS	3"	Ra 0.2 (8 Ra) EP	•	S	★			•	★		NI	•
			1/4" NPT Male	4N	3"	Ra 0.4 (16 Ra) EP	★	×	•			•	•		•	
40	712, 714, 716, 718, 720, 722, 724, 726, 728	7**	1/4" Tube Weld*	4BW	2 - 1/2"	Ra 0.2 (8 Ra) EP	•	★	•	V	1 - 3/8"	★	•	PC		
			1/4" Face Seal Male	4FS	3"	Ra 0.2 (8 Ra) EP	•	S	★			•	★		NI	•
			1/4" NPT Male	4N	3"	Ra 0.4 (16 Ra) EP	★	×	•			•	•		•	

Ordering example: 40 - 636 - 4BW - V - NI

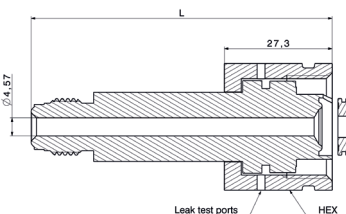
* Also available in 3/8" (6BW) and 1/2" (8BW) Tube Weld on request.

- ★ = available
- × = not available
- = on request

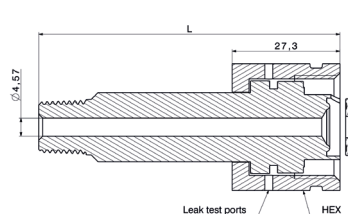
TUBE WELD



FACE SEAL MALE



NPT MALE



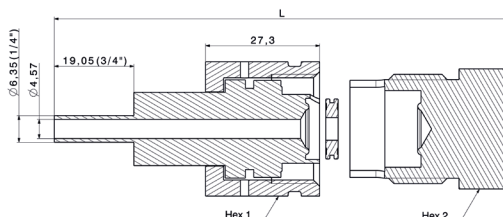
CGA/DISS | 45 SERIES COMPLETE CONNECTORS (Nipple, Nut, Gasket and Blank Plug)

	CGA/DISS number	End Connection	Overall Length (L)	Internal Surface Finish μm (μinch)	Nipple Material		HEX 1	Gasket Material		HEX 2						
					SS 316 L	VAR		Nickel	PCTFE							
45	632, 634, 636, 638, 640, 642	6**	1/4" Tube Weld*	4BW	3 - 3/8"	Ra 0.2 (8 Ra) EP	•	★	•	V	1 - 1/4"	★	•	PC		
			1/4" Face Seal Male	4FS	3 - 7/8"	Ra 0.2 (8 Ra) EP	•	S	★			•	★		NI	•
			1/4" NPT Male	4N	3 - 7/8"	Ra 0.4 (16 Ra) EP	★	×	•			•	•		•	
45	712, 714, 716, 718, 720, 722, 724, 726, 728	7**	1/4" Tube Weld*	4BW	3 - 3/8"	Ra 0.2 (8 Ra) EP	•	★	•	V	1 - 3/8"	★	•	PC		
			1/4" Face Seal Male	4FS	3 - 7/8"	Ra 0.2 (8 Ra) EP	•	S	★			•	★		NI	•
			1/4" NPT Male	4N	3 - 7/8"	Ra 0.4 (16 Ra) EP	★	×	•			•	•		•	

Ordering example: 45 - 636 - 4BW - V - NI

* Also available in 3/8" (6BW) and 1/2" (8BW) Tube Weld on request.

- ★ = available
- × = not available
- = on request



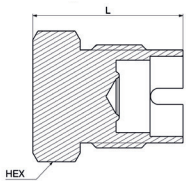
CGA/DISS | 50 SERIES BLANK PLUGS & 60 SERIES OUTLET ADAPTORS

	CGA/DISS number	End Connection	Overall Length (L)	Internal Surface Finish μm (μinch)	Nipple Material		HEX
					SS 316 L	VAR	
50	632, 634, 636, 638, 640, 642	Blank Plug	4BP	1.5"	Ra 0.2 (8 Ra) EP	★	1 - 1/8"
60		1/4" Face Seal Male	4FS	2"	Ra 0.2 (8 Ra) EP	★ S	
60		1/4" NPT Female	4N	1.8"	Ra 0.4 (16 Ra) EP	★	
50	712, 714, 716, 718, 720, 722, 724, 726, 728	Blank Plug	4BP	1.5"	Ra 0.2 (8 Ra) EP	★	1 - 1/4"
60		1/4" Face Seal Male	4FS	2"	Ra 0.2 (8 Ra) EP	★ S	
60		1/4" NPT Female	4N	1.8"	Ra 0.4 (16 Ra) EP	★	

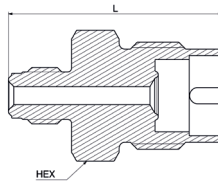
Ordering example: 50 - 636 - 4BP - V

- ★ = available
- = on request

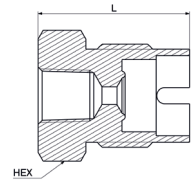
BLANK PLUG



FACE SEAL MALE



NPT FEMALE



CGA/DISS | 70 SERIES CYLINDER OUTLET SEAL CAPS (Nut, Cap, Gasket and Chain)

CGA/DISS number	End Connection	HEX	Hex Nut Material		Gasket Material	
			SS 316L	PC	PCTFE	PC
70 632, 634, 636, 638, 640, 642	Outlet cap	OC	1 - 1/4"	★	★	★
				★ S	★	★ PC
				★	★	★
70 712, 714, 716, 718, 720, 722, 724, 726, 728	Outlet cap	OC	1 - 3/8"	★	★	★
				★ S	★	★ PC
				★	★	★

Ordering example: 70 - 630 - OC - S - PC

- ★ = available

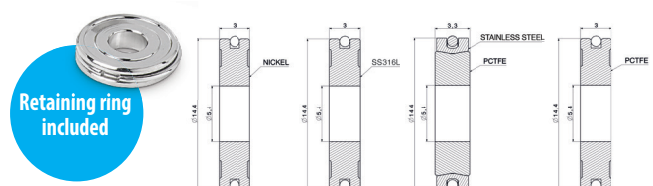
CGA/DISS | 30 SERIES CYLINDER VALVES GASKETS

CGA/DISS number	Gasket Material		HEX	Gasket Material
	Nickel	PCTFE		
30 632, 634, 636, 638, 640, 642	★	★	PC	0
	★ NI	★		
	★	★		
30 712, 714, 716, 718, 720, 722, 724, 726, 728	★	★	PC	0
	★ NI	★		
	★	★		

Ordering example: 30 - NI - 0

- ★ = available
- = on request

NICKEL SS 316 L PCTFE PCTFE



GASES / NORMS ASSIGNMENT TABLE*

Gas	UHP CGA/DISS	Gas	UHP CGA/DISS
Ammonia	NH ₃ 720	Hydrogen Fluoride	HF 638
Argon	Ar 718	Hydrogen Selenide	H ₂ Se 632
Arsenic Pentafluoride	AsF ₅ 642	Hydrogen Sulfide	H ₂ S 722
Arsine	AsH ₃ 632	Krypton	Kr 718
Boron Trichloride	BCl ₃ 634	Neon	Ne 718
Boron Trifluoride	BF ₃ 642	Nitrogen	N ₂ 718
Carbon Dioxide	CO ₂ 716	Nitrogen Trifluoride	NF ₃ 640
Carbon Monoxide	CO 724	Nitrous Oxide	N ₂ O 712
Chlorine	Cl ₂ 728	Oxygen	O ₂ 714
Diborane	B ₂ H ₆ 632	Perfluoropropane	CF ₂ (CF ₃) ₂ 716
Dichlorodifluoromethane	CCl ₂ F ₂ 716	Phosphine	PH ₃ 632
Dichlorosilane	H ₂ SiCl ₂ 636	Phosphorus Pentafluoride	PF ₅ 642
Diethylzinc	Zn(C ₂ H ₅) ₂ 726	Silane	SiH ₄ 632
Dimethylzinc	(CH ₃) ₂ Zn 726	Silicon Tetrachloride	SiCl ₄ 636
Germane	GeH ₄ 632	Silicon Tetrafluoride	SiF ₄ 642
Halocarbons**	/ 716	Sulphur Hexafluoride	SF ₆ 716
Helium	He 718	Triethylaluminium	(C ₂ H ₅) ₃ Al 726
Hydrogen	H ₂ 724	Tungsten Hexafluoride	WF ₆ 638
Hydrogen Bromide	HBr 634	Xenon	Xe 718
Hydrogen Chloride	HCl 634		

* This list is non exhaustive and for your information only. Source: CGA V 1 1994

** Halocarbon CF4 14: CGA 320 or 580



APPLICATIONS

- ★ Ultra-High Integrity Services Connections, DISS, are used for connecting items of gas handling equipment (such as pressure regulators or pigtails) directly to the cylinder valve outlet of a semiconductor/high-purity gas cylinder.

KEY FEATURES

- ★ 100% visual inspection of critical surfaces
- ★ Electropolished internally
- ★ Ultimate decontamination and packaged in certified clean room
- ★ Permanently marked
- ★ Manufactured according to CGA V-1 standards
- ★ Fits all local norms and standards
- ★ Non-rotating design provides leak tight makeup

FOR FURTHER INFORMATION:

★ CALL OUR CUSTOMER SERVICE TEAM



+352 32 78 32 - 914

★ CONTACT US BY E-MAIL



salesequipment@rotarex.com

To serve semiconductor and micro-electronics customers, Rotarex was among the first to design and manufacture high quality UHP cylinder valves. Rotarex is also committed to producing ultra high integrity (DISS) connections for UHP applications.

Standard service CGA connections are also part of Rotarex cylinder connectors range, as well as JIS, DIN, BS & NF standards.