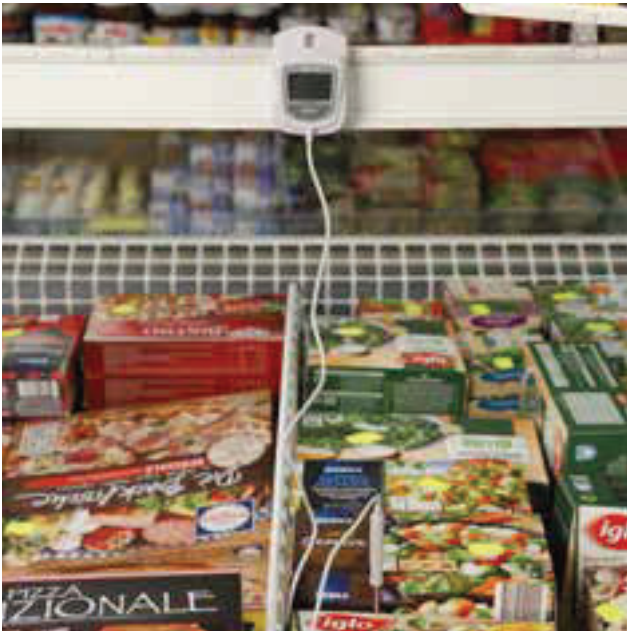


## EBI 20 Standard Data Loggers

With a total memory capacity of 40,000 measurements the easy to use EBI 20 data loggers are suitable for the continuous documentation and monitoring of temperature and humidity. All EBI 20 data loggers are delivered with a factory calibration certificate and a user replaceable battery. The data loggers are very reliable and durable and have an excellent price-performance ratio. They are well suited for mappings e.g. of warehouses to identify critical temperature spots.

### Applications:

- Transport monitoring
- Storage monitoring
- Process monitoring
- Temperature mapping





### General technical specifications: valid for all types\*

Resolution: Temperature	0.1 °C (0.2 °F)
Resolution: Humidity (only humidity data loggers)	0.1 % rH
Measurement mode	<ul style="list-style-type: none"> <li>• Endless measurement</li> <li>• Start immediately until end of memory</li> <li>• Start / stop measurement</li> <li>• Start with key press</li> </ul>
Operating temperature	-30 °C ... +70 °C (-22 °F ... +158 °F)
Storage temperature	-40 °C ... +70 °C (-40 °F ... +158 °F)
Battery	3 V lithium (CR2450), user replaceable
Battery lifetime	Up to 24 months, at a sampling rate of 15 min. at +25 °C (77 °F)
Housing material	ABS
Dimensions (L x W x H)	69 x 48 x 22 mm**
Weight	Approximately 45 g**
Certificate	Factory calibration certificate

\* Please find the exact technical data of each EBI 20 logger type on the next pages.

\*\* Dimensions and weight just refer to the EBI 20 housing.

## EBI 20-T1 Standard Temperature Data Logger with internal temperature sensor



### Technical Data

Measurement range	-30 °C ... +70 °C (-22 °F ... +158 °F) (please see the note on the next page)
Accuracy	±0.5 °C (-20 °C ... +40 °C) / ±0.9 °F (-4 °F ... +104 °F) ±0.8 °C (±1.4 °F) for the remaining measurement range
Data memory	1 channel, 40,000 measurements
Sensor	NTC
Sampling rate	1 min to 24 hours
Protection class	IP67
Factory calibration certificate	-20 °C and 0 °C

Type	Description	Part No.
EBI 20 T1	Temperature logger	1601-0042A

## EBI 20-TE1 Standard Temperature Data Logger with external probe



### Technical Data

Measurement range	-30 °C ... +70 °C (-22 °F ... +158 °F) (please see the note on the next page)
Accuracy	±0.5 °C at -20 °C ... +40 °C (±0.9 °F at -4 °F ... +104 °F) ±0.8 °C (±1.4 °F) for the remaining measurement range
Data memory	1 channel, 40,000 measurements
Sensor	NTC, 55 mm, Ø 3 mm, pointed
Sampling rate	1 min to 24 h
Cable	Silicone, L = 0.8 m
Protection class	IP67
Factory calibration certificate	-20 °C and 0 °C

Type	Description	Part No.
EBI 20-TE1	Temperature logger with external probe	1601-0043A

## EBI 20-TF Standard Temperature Data Logger with external probe up to +100 °C (+212 °F)



### Technical Data

Measurement range	0 °C ... +100 °C (+32 °F ... +212 °F)
Accuracy	±0.5 °C (+50 °C ... +100 °C) ±1 °C for the remaining measurement range
Data memory	1 channel, 8,000 measurements
Sensor	NTC, 55 mm, Ø 3 mm, pointed
Sampling rate	Adjustable from 1 sec to 24 hours
Cable	Silicone, L = 0.8 m
Protection class	IP67
Factory calibration certificate	+20 °C and +60 °C

Type	Description	Part No.
EBI 20-TF	Temperature data logger with external probe	1601-0010A

## EBI 20-TH1 Standard Temperature / Humidity Data Logger with internal humidity sensor



### Technical Data

Measurement range: humidity	0 % rH ... 100 % rH
Accuracy: humidity	±3 % rH (10 % rH ... 90 % rH)
Measurement range: temperature	-30 °C ... +70 °C (-22 °F ... +158 °F) (please see the note below)
Accuracy: temperature	±0.5 °C at -20 °C ... +40 °C (±0.9 °F at -4 °F ... +104 °F) ±0.8 °C (±1.4 °F) for the remaining measurement range
Data memory	40,000 measurements
Channels	channel 1: relative humidity, channel 2: temperature
Sensor	NTC, capacitive humidity sensor
Sampling rate	1min ... 24h
Protection class	IP52

Type	Description	Part No.
EBI 20-TH1	Temperature/Humidity Data Logger	1601-0044A

## Sets and Accessories for EBI 20



**EBI 20-T1-Set** Temperature logger set (temperature logger, evaluation software, interface)



**EBI 20-TE1-Set** Temperature logger set (logger with external probe, evaluation software, interface)



**EBI 20-TF-Set** Temperature logger set (logger with external probe up to +100 °C (+212 °F), evaluation software, interface)



**EBI 20-TH1-Set** Temperature Humidity Logger Set (Logger, Evaluation software, Interface)



**EBI 20-IF Interface**



**EBI 20-WM wall bracket**



**EBI 20-WM-1 truck wall bracket**



The temperature measurement range of some EBI 20 models has been increased from +60 °C to +70 °C. This may require an update of the Winlog software.

Type	Description	Part No.
EBI 20-T1-Set	Temperature logger set (temperature logger, evaluation software, interface)	1601-0046A
EBI 20-TE1-Set	Temperature logger set (logger with external probe, evaluation software, interface)	1601-0047A
EBI 20-TF-Set	Temperature logger set (logger with external probe up to +100 °C (+212 °F), evaluation software, interface)	1601-0011A
EBI 20-TH1-Set	Temperature Humidity Logger Set (logger, evaluation software, interface)	1601-0048A
EBI 20-IF	Interface for EBI 20, incl. cable and evaluation software	1601-0020
EBI 20-WM	EBI 20 wall bracket with padlock	1601-0030
EBI 20-WM-1	EBI 20 truck wall bracket	1601-0033